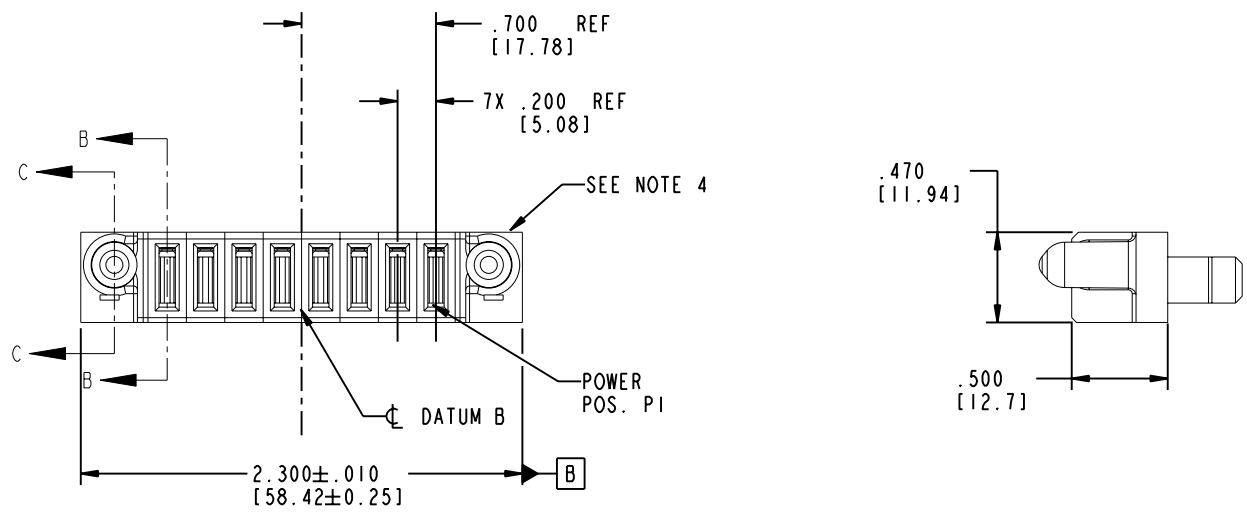
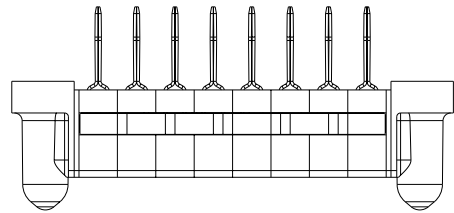


Tous droits strictement reserves. Reproduction ou communication a des tiers interdite sous quelque forme que ce soit sans autorisation écrite du propriétaire. Propriete de c FCI. Droits de reproduction FCI.

All rights strictly reserved. Reproduction or issue to third parties in any form whatever is not permitted without written authority from the proprietor. Property of FCI. Copyright FCI.



PRODUCT NO. 51925-003 NOTE ③	POWER								E1
	E2	P8	P7	P6	P5	P4	P3	P2	
	PG	PG	PG	PG	PG	PG	PG	PG	



CODE	DIM "M" MATING LENGTH	CONTACT TYPE
PG	.042 [1.07]	POWER

mat'l code SEE NOTE 2				tolerances unless otherwise specified		CUSTOMER		www.fciconnect.com	
ltr	ecn no.	dr	date	linear	projection	COPY		title	
A	DG06-0004	SW	01/05/06	.XX±.01/0.X±0.3		8P		VERTICAL CABLE RECEPT	
				.XXX±.005/0.XXX±0.13	INCH/MM	product family		code	
				.XXX±.0020/0.XXX±0.051		PwrBlade		213	
				angles 0° ± 2°	scale 1:1	size		sheet	
				dr STEVEN WANG 01/05/06		51925-003		1 of 4	
				enr STEVEN WANG 01/05/06					
				chr BEER FU 01/05/06					
				appd JOSEPH HSIA 01/05/06					
sheet index	revision sheet	A 1	A 2	A 3	A 4				

Pro/E 3 cage code 22526 4

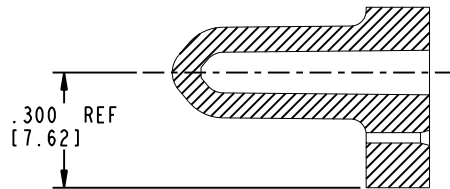
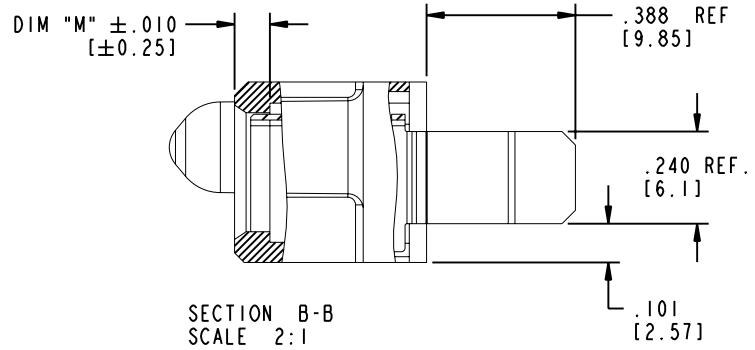
Tous droits strictement reserves. Reproduction ou communication a des tiers interdite sous quelque forme que ce soit sans autorisation écrite du propriétaire. Propriete de c FCI. Droits de reproduction FCI.


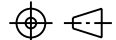

A
FCI

All rights strictly reserved. Reproduction or issue to third parties in any form whatever is not permitted without written authority from the proprietor. Property of FCI. Copyright FCI.

PRODUCT NUMBER

51925-003..
NOTE ③



mat'l code				SEE NOTE 2		tolerances unless otherwise specified		CUSTOMER		 FCI www.fciconnect.com	
ltr	ecn no.	dr	date	linear	.XX±.01/0.X±0.3		COPY		 title 8P VERTICAL CABLE RECEPT		
A					.XXX±.005/0.XX±0.13		projection				
				angles	.XXXX±.0020/0.XXX±0.051		 INCH/MM		product family PwrBlade code 213		
					0° ± 2°				scale		sheet 2 of 4
				dr	STEVEN WANG	01/05/06	1:1		size 51925-003		
				enr	STEVEN WANG	01/05/06			dwg no		
				chr	BEER FU	01/05/06			A		
				appd	JOSEPH HSIA	01/05/06			cage code 22526		
sheet index		revision sheet									

Pro/E

PDM: Rev:A

STATUS: **Released**

Printed: Dec 20, 2010

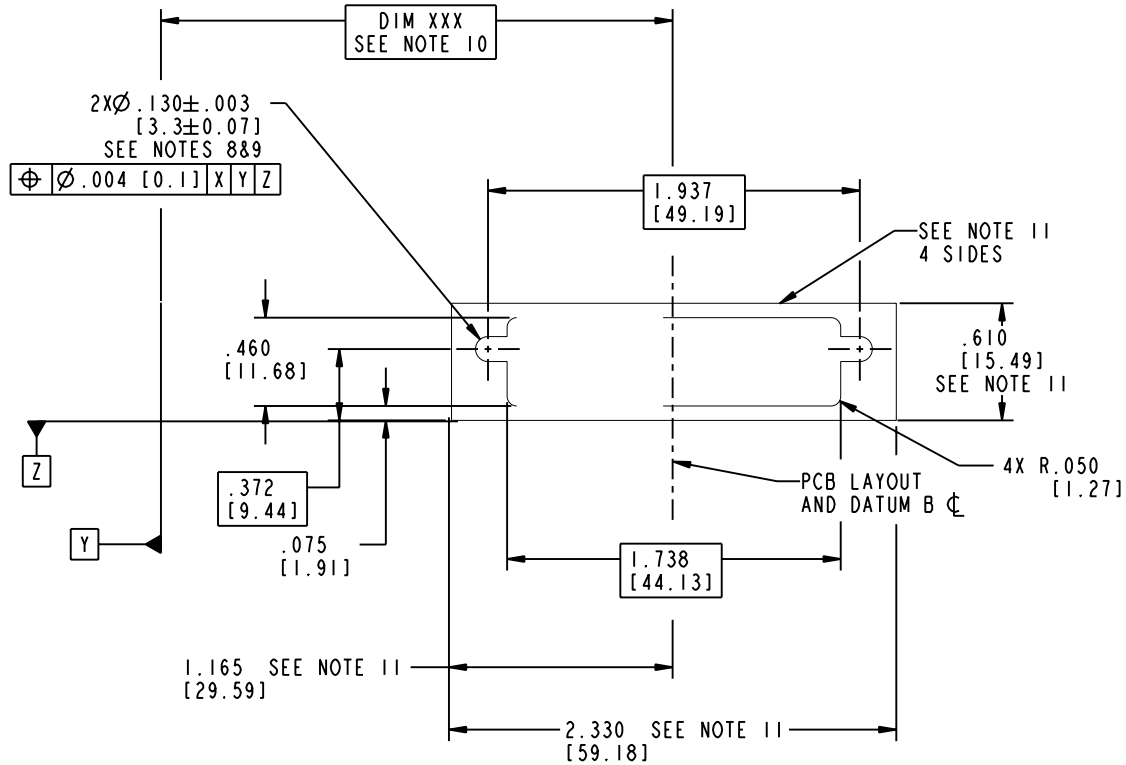
Tous droits strictement réservés. Reproduction ou communication a des tiers interdite sous quelque forme que ce soit sans autorisation écrite du propriétaire. Propriété de c FCI. Droits de reproduction FCI.

A FCI

All rights strictly reserved. Reproduction or issue to third parties in any form whatever is not permitted without written authority from the proprietor. Property of FCI. Copyright FCI.

PRODUCT NUMBER

51925-003..
NOTE ③



mat'l code		SEE NOTE 2		tolerances unless otherwise specified		CUSTOMER		 www.fciconnect.com	
ltr	ecn no.	dr	date	linear	.XX±.01/0.X±0.3	COPY		title	
A				linear	.XXX±.005/0.XX±0.13	projection		8P	
				angles	.XXX±.0020/0.XX±0.051			VERTICAL CABLE RECEIPT	
				dr	STEVEN WANG 01/05/06	INCH/MM		product family	
				enr	STEVEN WANG 01/05/06	scale		PwrBlade code	
				chr	BEER FU 01/05/06	1:1		213	
				appd	JOSEPH HSIA 01/05/06			size	
sheet index		revision sheet						51925-003	
								3 of 4	

Pro/E

cage code 22526

PDM: Rev:A

STATUS: Released

Printed: Dec 20, 2010

Tous droits strictement réservés. Reproduction ou communication a des tiers interdite sous quelque forme que ce soit sans autorisation écrite du propriétaire. Propriété de c FCI. Droits de reproduction FCI.

A
FCI

All rights strictly reserved. Reproduction or issue to third parties in any form whatever is not permitted without written authority from the proprietor. Property of FCI. Copyright FCI.

B

PRODUCT NUMBER

51925-003..
NOTE ③

NOTES:

1. DIMENSIONS AND TOLERANCES ARE IN ACCORDANCE WITH ASME Y14.5M, 1994 UNLESS OTHERWISE SPECIFIED.

CONNECTOR NOTES:

② HOUSING MATERIAL: UL 94 V-0 GLASS FILLED
HIGH-TEMP THERMOPLASTIC
POWER CONTACT MATERIAL: COPPER ALLOY
SIGNAL PIN MATERIAL: COPPER ALLOY

3. PLATING:
51925-003,51925-003LF PLATING SPEC. WAS SHOWN IN THE PRINT OF 10064183.

④ NO PRINTING HERE.
THIS SURFACE.

5. PRODUCT SPECIFICATION GS-12-149.
APPLICATION SPECIFICATION BUS-20-067.
6. PACKAGED IN TRAYS.

PCB NOTES:

7. ALL HOLE DIAMETERS ARE FINISHED HOLE SIZE.

⑧ MOUNTING HOLES, WHERE APPLICABLE, ARE UNPLATED.

⑨ RECOMMENDED RETENTION TO PCB
Ø.13[3.3] THRU HOLE FOR #5 SOCKET HEAD CAP SCREW
MAX. HEAD .205[5.21] RECOMMENDED SCREW LENGTH 12mm [.472] + PCB THICKNESS
RECOMMENDED SCREW SEATING TO PCB TORQUE:2-5 lbf - in (2300-5760 gf-cm).

⑩ "DIM XXX" TO BE DETERMINED BY THE CUSTOMER.

⑪ CONNECTOR KEEP-OUT ZONE.

mat'l code		SEE NOTE 2		tolerances unless otherwise specified		CUSTOMER		A FCI www.fciconnect.com	
ltr	ecn no.	dr	date	linear	.XX±.01/0.XX±0.3		COPY		title 8P VERTICAL CABLE RECEPT
A				angles	.XXX±.005/0.XX±0.13 .XXX±.0020/0.XX±0.051 0°+2°		projection 		
				dr	STEVEN WANG	01/05/06	INCH/MM 		product family PwrBlade
				enr	STEVEN WANG	01/05/06	scale 1:1		code 213
				chr	BEER FU	01/05/06			sheet 4 of 4
				appd	JOSEPH HSIA	01/05/06			size A 51925-003
sheet index	revision sheet								

Pro/E

cage code **22526**

PDM: Rev:A

STATUS: **Released**

Printed: Dec 20, 2010